



Case Study

Four Seasons Hotel, Park Lane, London

Client: Four Seasons Hotel chain

Architect: Chahan Interior Design

Project completion date: October 2023

Project value: £110,000

Project type: Architectural Division

Details of the Design:

A helical staircase to take customers from the ground floor hotel entrance up to the first floor.

Who is the user?

Customers at this recently refurbished hotel in the heart of London.



Constraints / challenges?

This is a busy London Hotel and subsequently has extremely high footfall. Our design needed to look luxurious whilst being robust enough to look fantastic for years to come!

Many different trades were working on this project, but with our experience we took the lead and worked with others to ensure the job was finished to perfection.

Fabrication detail:

This swanky hotel required a grand sweeping helical staircase created from 10mm double skin stringers which created a glass support track. From this steel treads were designed to support grand marble treads which gives this design a highly polished look.

The Elite Metal Group was also chosen to provide the steelwork in the surrounding area to support the staircase.

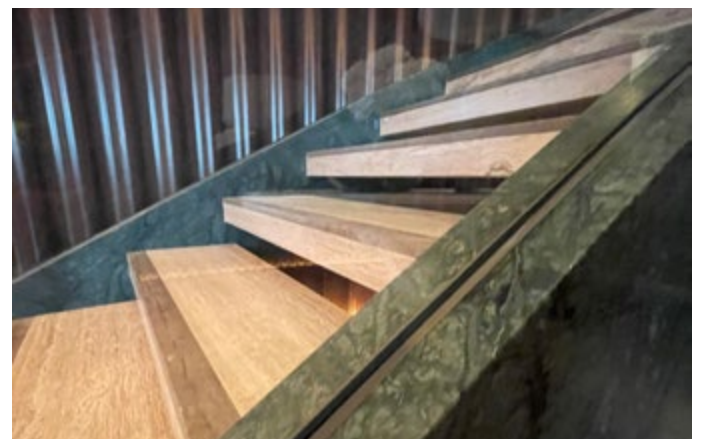
Installation detail:

We were fortunate enough to be instructed to project manage the entire staircase which ensured that we were able to use our Team to complete a survey before any work commenced. This information ensure that our drawings were 100% accurate which gave our Design Team complete confidence. We're fortunate enough to have an in-house manufacturing Team who turned this job around quickly to meet all deadlines.

Our in-house Installation Team spent 3 weeks on site ensuring that the staircase was built with the care and attention it deserves.

Why was the Elite Metal Group chosen for this project?

We've worked with main Architect - Chahan Interior Design for a number of years, so we were the natural choice. For more than 70 years the Elite Metal Group has been designing bespoke, quality staircases that brings buildings to life.



The finished project:

It's great to be working on such a prestigious project that members of the public can view and access when in central London. It was a pleasure designing, manufacturing and installing beautiful staircase.